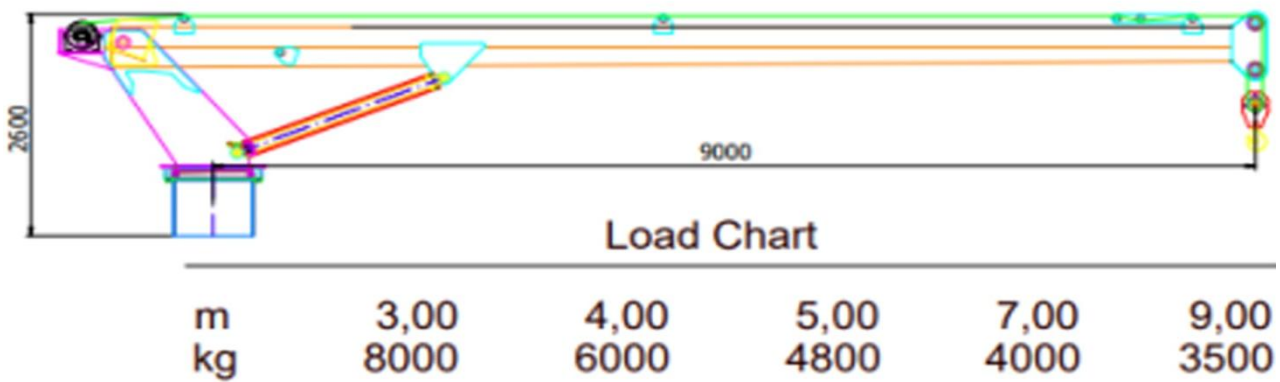


## Rescue Boat Crane

Maker: TME

Model: TME-GM-45-T1



## Rescue Boat Crane

Maker: TME

Model: TME-GM-45-T1

### SPECIFICATION

Maker	TME
Model	TME-GM-45-T1
<b>Environmental Condition</b>	
Ambient Temperature	5 <sup>0</sup> C to + 50 <sup>0</sup> C
Relative Humidity	Up to 95% non-condensing
Location	At Sea & Costal Area
<b>Technical Specification</b>	
Type	Rescue Boat Crane
Model	TME-GM-45-T1
Maker	TME
Safe Working Load (SWL)	3.5 Tonnes
Running Test Load	1.5 times of SWL
Static Test Load	2.2 times of SWL
Working Radius	2.9 m to 5.3 m
Hoist Speed	30m/min
Weight	7.5 tons
Slewing Operating Arc	Approximately 210°
Movement Axis	Both upward/downward and side wise movement
Average Running Hour	5 hours/day
Slewing speed	1 rev/min
Slew Drive and Gearing	Pinion drive
Jib & Frame Luffing Cylinder	Knucle Jib boom fixed, Less than 15 sec.
Powerpack Main Pump Output	250-280 bar
Boost Pump Output (if any)	Manual for safety working
Working winch & wire rope	Rope reel drum. Wire rope length : 30 m.
Type	AC Motor
Motor Power (kW)	22,5 kW
Power Supply	400V, 50Hz, 3 Phase. The motor have the tolerance of 10% voltage fluctuation.
Motor RPM	1450 rpm
Ingress Protection	IP55